



February 2, 2022

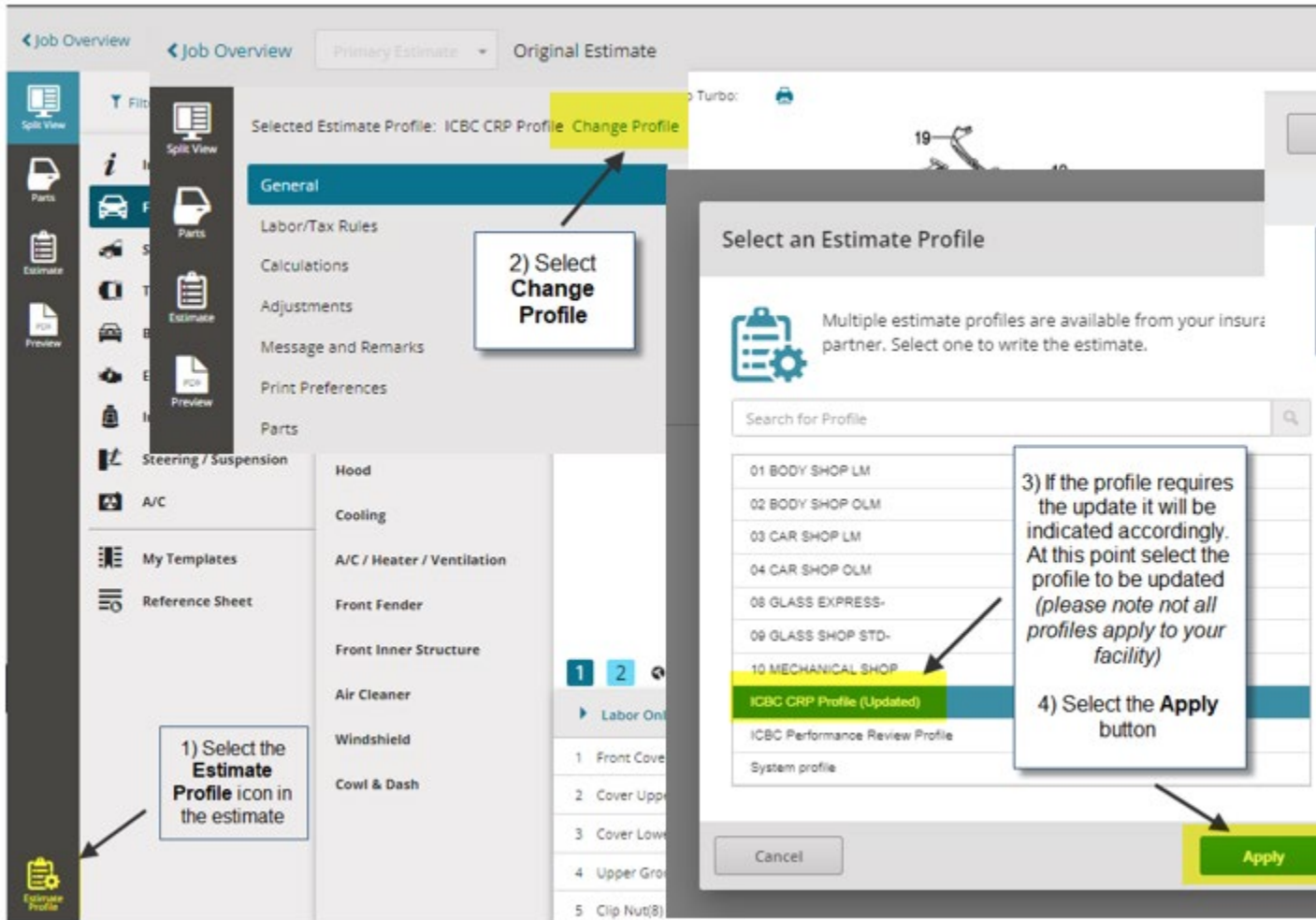
Attn: Collision Repair Program Participants

RE: Feather, Prime and Block Steps

It appears that some repair facilities are not seeing the new feather, prime and block rate (User Defined 1) on some in-progress estimates. Should this occur, please follow the steps below to force a profile update on the estimate in question.

Please note that this is not required for any net new estimates started on or after February 1st, 2022 as they will have the correct profile already in place. These steps are only required if an in-progress estimate did not received the profile change.

Also note, as previously communicated, this only applied to Mitchell Cloud Estimates.





If the estimate already has the **FEATHER, PRIME & BLOCK** template line added to the estimate and you needed to do the steps above, you may have to update the **FEATHER, PRIME & BLOCK** template line to the User Defined 1 labour type.

To do this, please follow the steps below:

The screenshot shows a software interface with a table of items. The table has columns for description, type, and quantity. The 'FEATHER, PRIME & BLOCK' item is selected, and a dropdown menu is open showing options: 'Frame', 'Mechanical', 'Carbon Fiber', 'Aluminum Repair', 'User Defined 1', and 'User Defined 2'. 'User Defined 1' is highlighted in green. Below the dropdown, 'Body' is highlighted in yellow. The quantity '2' is visible next to the 'Body' option. Below the table, there are buttons for 'Delete' and 'Markup, adjustment, or explanation'.

Additional Costs & Materials		
Paint/Materials	Additional Cost	
Shop Materials	Additional Cost	
Additional Operations		
Clear Coat	Additional Operation	
Special / Manual Entry		
FEATHER, PRIME & BLOCK	Repair	2

Thank you

Cory Marion
Business Process Advisor