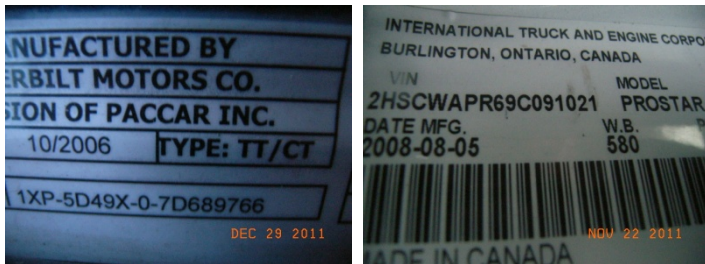


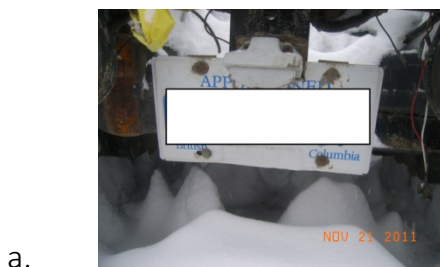
1. The number of pictures needed are 20+
2. If using a smart phone, pictures will need to be reduced in size or sent in groups of 2 or 3. Maximum allowable file size for attachments sent to ICBC is 25MB. Your camera should be put on a small setting for pictures size, 640x480 pixels is recommended.
3. The Vehicle Identification Number-located either on the left door pillar, left door frame, left side under side of the dash board. The camera should have Macro capabilities to get close enough to read.



4. Vehicle instrument cluster-primarily the vehicle odometer. Sometimes the ignition will have to be turned on or turning on the headlights. This will illuminate the odometer in electronic equipped vehicles.



5. Front or rear license plate-whichever one has the decal on it.



6. Right front corner-at a 45 degree angle and including the whole front end and whole right side.

ICBC HEAVY EQUIPMENT DAMAGE PHOTOS REQUIREMENTS. PICTURES ARE FOR EXAMPLE ONLY.



7. Right rear corner-at a 45 degree angle and including the complete rear end and whole right side.



8. Left rear corner-at a 45 degree angle and including the complete rear end and whole left side of the vehicle.



9. Left front corner-at a 45 degree angle and including the complete front end and whole left side.

10. Pictures of the interior-including the dashboard, gear shift, radio's, CB, Stereo, floor covering, and sleeper configuration (double bunk, fridge, cabinets). If the cab is separated from the frame then pictures are needed of the unit.





11. Pictures of the damage-as many pictures that are needed to tell how much damage there is to the vehicle. Multiple pictures at different angles and distances are preferable. Include undercarriage if there is damage present, especially if to engine. Open the hood if possible if the engine is damaged.



12. Pictures of the wheels and tires-to help determine how much wear and tear are left, whether the rims are steel or aluminum, whether all wheels are aluminum or a mix.

